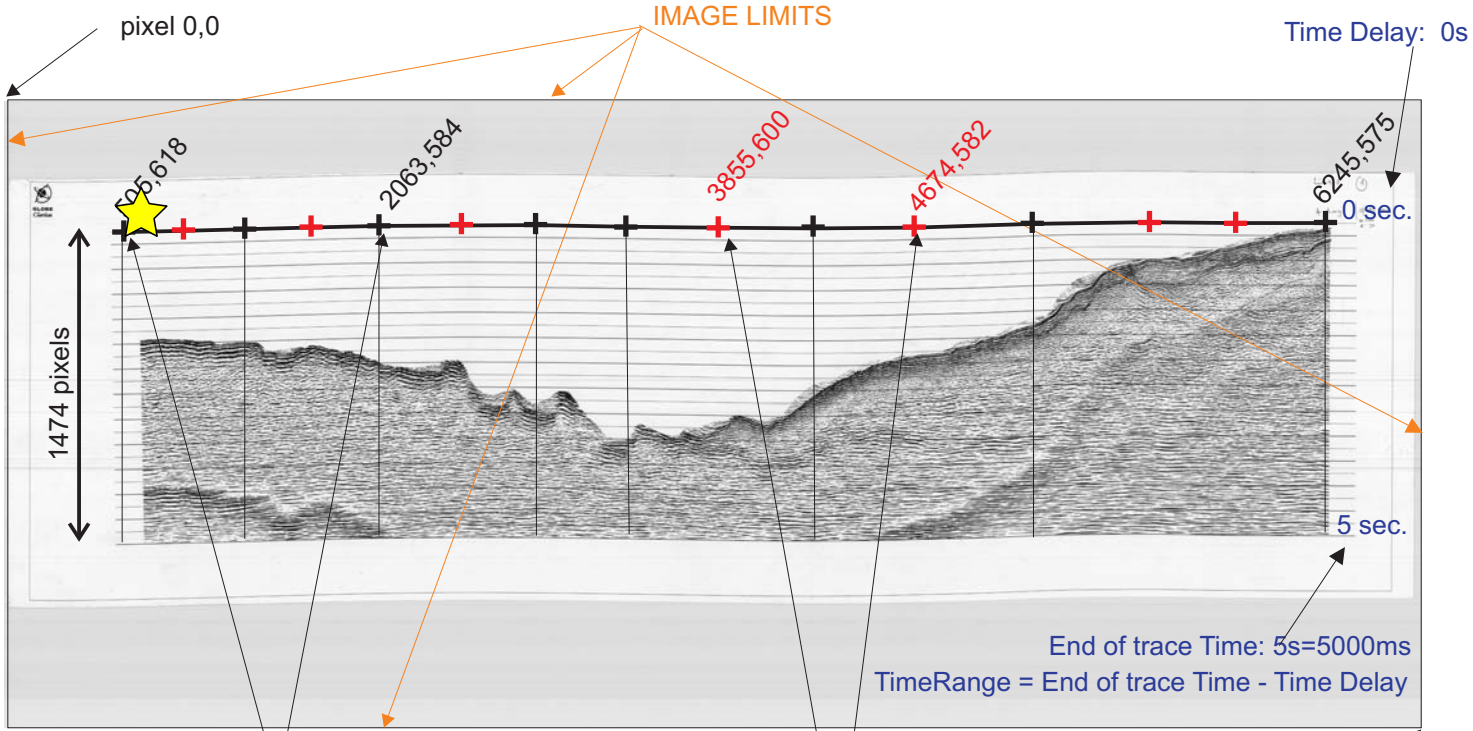


## SCANNED PROFILE (L-34)



pixels with known position (FIX)

No FIX pixels  
Digitized for horizontal correction

unknown position  
pixel 6668,2946

### TEXT FILE

```

1474,34,0,1,3,30
505,618,200000,400000,0,5000
879,609,0,0,0,5000
1328,596,350000,4050000,0,5000
1680,589,0,0,0,5000
...
2063,584,400000,4100000,0,5000
2419,583,0,0,0,5000
2813,587,450000,4150000,0,5000
3518,598,500000,4200000,0,5000
3855,600,0,0,0,5000
4241,594,550000,4250000,0,5000
4674,582,0,0,0,5000
5064,569,600000,4300000,0,5000
5388,568,0,0,0,5000
5963,576,0,0,0,5000
6245,575,670000,4350000,0,5000
    
```

first line: trace length( pixels),line (only numbers),ML,REV,DSF,ZUTM  
known fix

unknown position

....

unknown position (0,0)

.....  
last known fix

Pixels value can be digitized using **Engauge Digitizer** (<http://digitizer.sourceforge.net/>) or displayed using **IrfanView** or **Microsoft Paint.Net**. All programs are free.

posX(pixel) , posY(pixel), UTM\_X(m), UTM\_Y(m), Delay (ms), TimeRange (ms)

